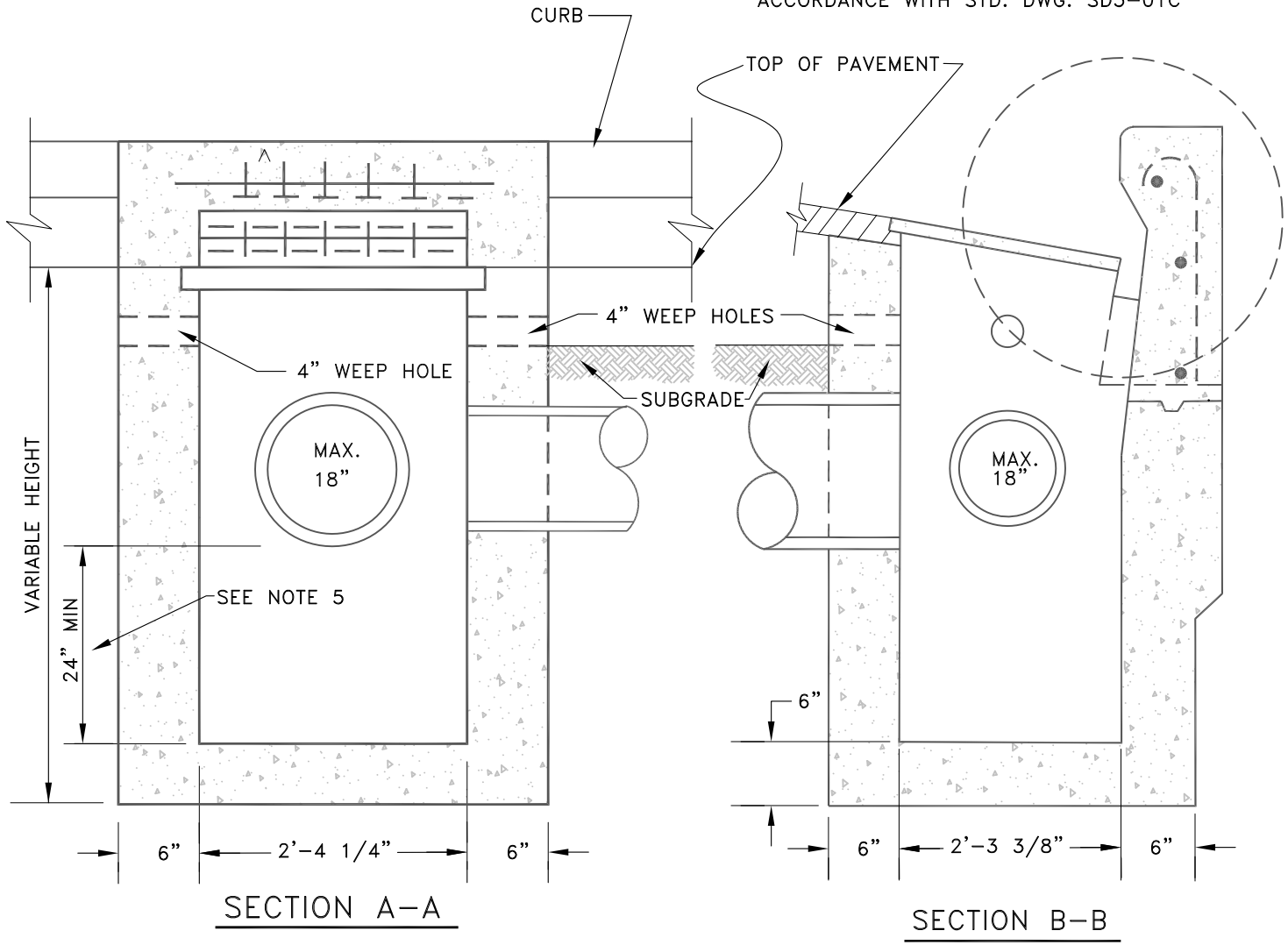
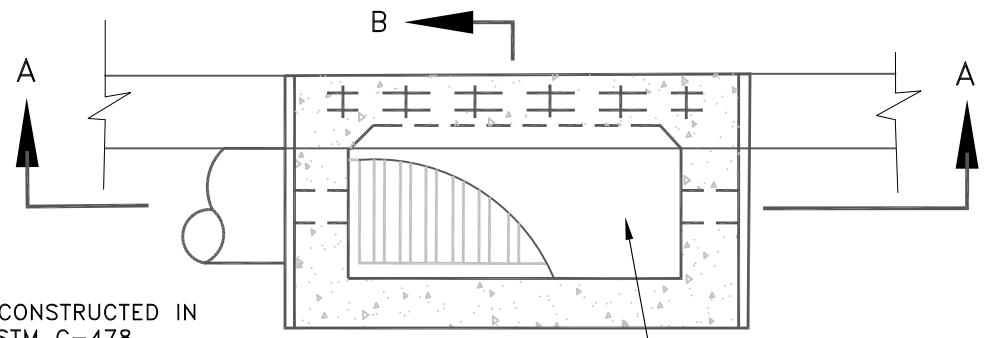


RECESSED CURB INLETS TO BE INSTALLED IN ACCORDANCE WITH STD. DWG. SD5-01C



SECTION A-A

SECTION B-B



PLAN

NOTES:

- 1) CATCH BASIN TO BE CONSTRUCTED IN ACCORDANCE WITH ASTM C-478.
- 2) 8" OF 1"- 0" OR 3/4"- 0" COMPACTED BASE MATERIAL.
- 3) MAXIMUM DEPTH OF STANDARD CATCH BASIN TO BE 6' FROM TOP OF GRATE TO FLOW LINE OF LOWEST PIPE.
- 4) REINFORCEMENT TO BE REBAR MEETING A615 GRADE 60 OR WELDED WIRE MEETING ASTM A497.
- 5) MINIMUM SUMP DEPTH IS 24" TYPICAL, 36" MINIMUM SUMP DEPTH IF FITTED WITH A SNOOT



City of Lake Oswego  
Engineering Division  
Erica Rooney, P.E. City Engineer

OVERSIZE CURB AND GUTTER  
CATCH BASIN (CG-2)

SD5-01B